

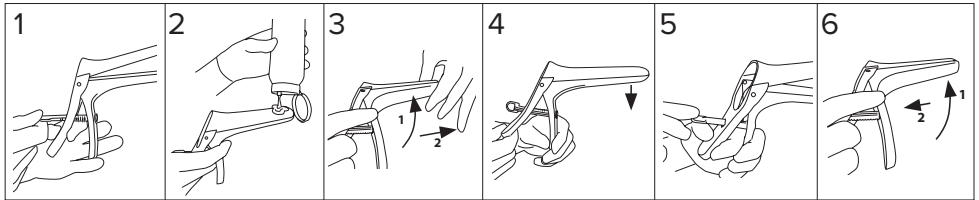
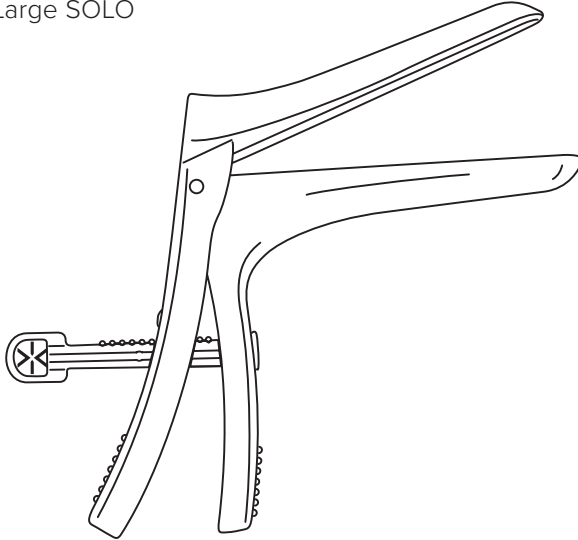
EasySpec® SOLO

1211 EasySpec® XS SOLO

1221 EasySpec® Small SOLO

1231 EasySpec® Medium SOLO

1241 EasySpec® Large SOLO



en

40-1211-SOLO-1221-SOLO-1231-SOLO-1241-SOLO-241219



Intended purpose: The 2-part vaginal speculum is a single use device with locking mechanism to part the vaginal walls during gynaecological examinations and procedures performed by healthcare professionals.

1. Carefully remove the speculum from its packaging. Test the functioning of the speculum in locked and opened position before insertion.
2. Lock the speculum in the closed position and apply lubricating gel to the top and bottom of the beaks.
3. Hold the speculum with one hand and angle up to 90 degrees. Hold the labia apart with one hand and gently insert the speculum into the vagina.
4. Angle the speculum back to 0 degrees and gently press down against the posterior vaginal wall.
5. Loosen the lock and open the speculum so that the posterior and anterior vaginal wall are kept apart to identify the affected area. Lock the speculum in the position you want to work with.
6. At the end of the examination, loosen the lock and close the speculum and angle up to 90 degrees and carefully take it out. Be careful not to pinch the portio or vaginal mucosa when taking the speculum out.

The medical device should be disposed of as per respective hospital policy.

All serious incidents occurring in connection with the product should be reported to the manufacturer and the competent authority.



A) Consult instructions for use B) Catalogue number C) Batch code D) Medical device E) Keep away from sunlight F) Manufacturer G) Use-by date H) Do not use if package is damaged and consult instructions for use I) Keep dry J) Does not contain or presence of natural rubber latex K) Do not re-use L) Not sterile M) Complies with Regulation (EU) 2017/745 of the European Parliament and of the Council of 5 April 2017 on medical devices.